



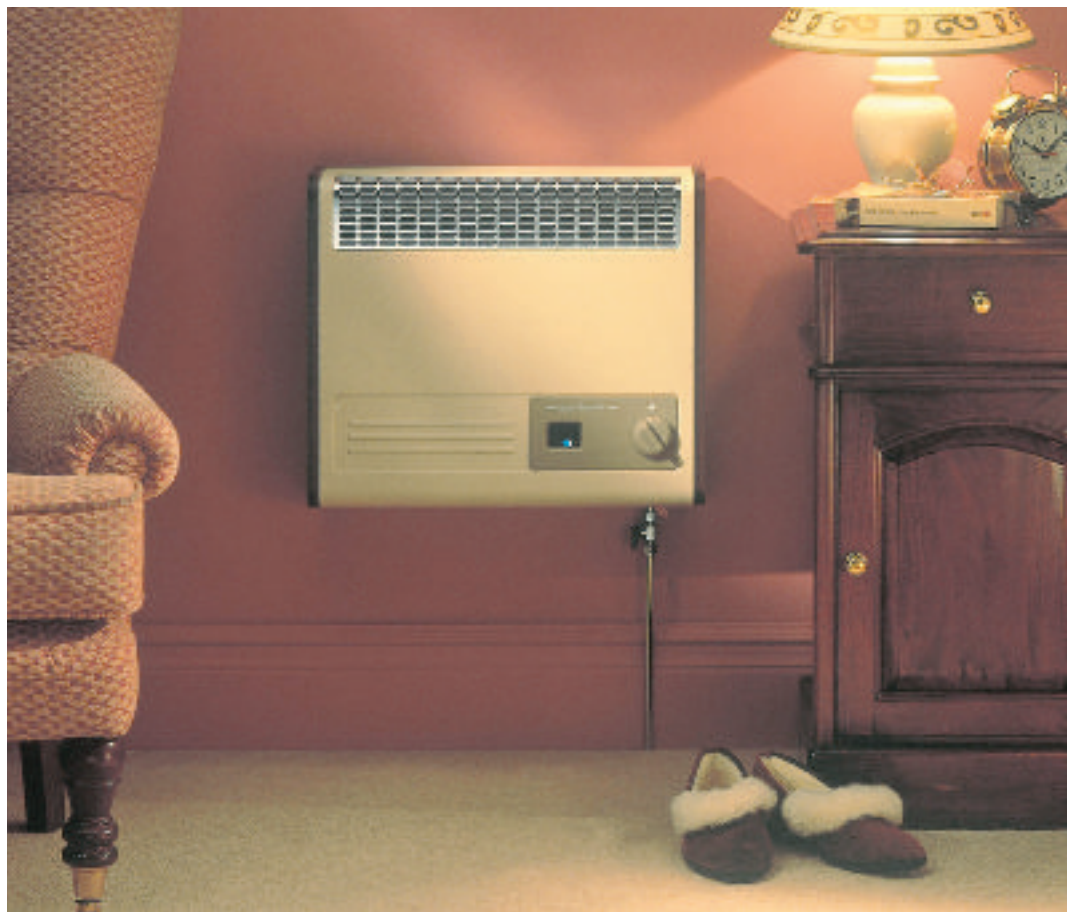
Brazilia F 5 in beige.

brazilia F 5

- Available in beige finish
- No chimney/flue required
- Optional special needs adaptor available
- Optional safety guard
- Heat output
Brazilia F 5-1.5kW

wall heaters

The Baxi Brazilia range of heaters is the ideal way to banish the chill from any cold spots in your home. For added peace of mind an optional safety guard is available to prevent children from touching the hot heat outlet. An easy control adaptor is also available for those with special needs. Highly efficient, extremely reliable and totally versatile, Brazilia wall heaters are perfect in any setting.



Brazilia F 5S in beige.

brazilia F 5S

- Available in beige with mahogany or oak effect panels
- No chimney/flue required
- Optional special needs adaptor available
- Optional safety guard
- Heat output
Brazilia F 5S-1.5kW





Brazilia F 8S in beige.

brazilia F 8S

- Available in beige with mahogany or oak effect panels
- No chimney/flue required
- Optional special needs adaptor available
- Optional safety guard
- Heat output
Brazilia F 8S-2.3kW

brazilia F 8ST

- Available in beige with oak effect side panels
- No chimney/flue required
- Optional special needs adaptor available
- Optional safety guard
- Thermostatic 'comfort control' system
- Heat output
Brazilia F 8ST-2.3kW

		DECADENT	DECADENT SLIMLINE	MINIMA	MINIMA SLIMLINE	HERITAGE	HERITAGE SLIMLINE	BAROQUE SUPER	BRAVA	CHARM	ESQUIRE /ELECTRONIC	DECADENT ELECTRIC	MINIMA ELECTRIC	DECADENT BALANCED FLUE	BRAZILIA F 5	BRAZILIA F 6S	BRAZILIA F 6S	BRAZILIA F 6ST	
HEAT OUTPUT	MIN	1.5 NG 2.5 LPG	1.4 NG 2.4 LPG	0.9 NG 2.1 LPG	1.2 NG 1.6 LPG	1.1 NG 2.2 LPG	1.4 NG 2.3 LPG	1.2 NG	1.0 NG	1.0 NG	1.0 NG	1.0kW	1.0kW	1.1 NG	0.6 NG 0.6 LPG	0.6 NG 0.6 LPG	0.8 NG 0.8 LPG	0.8 NG 0.8 LPG	
	MAX	4.0 NG 4.1 LPG	3.5 NG 3.5 LPG	3.5 NG 3.7 LPG	3.0 NG 3.1 LPG	3.5 NG 3.7 LPG	3.1 NG 3.3 LPG	3.4 NG	4.0 NG	4.0 NG	4.0 NG	2.0kW	2.0kW	2.7 NG	1.5 NG 1.5 LPG	1.5 NG 1.5 LPG	2.3 NG 2.3 LPG	2.3 NG 2.3 LPG	
HEAT INPUT	MIN	2.7 NG 4.3 LPG	2.7 NG 4.3 LPG	2.3 NG 4.0 LPG	2.3 NG 3.8 LPG	2.7 NG 4.3 LPG	2.7 NG 4.3 LPG	2.1 NG	1.57 NG	1.57 NG	1.57 NG	1.0kW	1.0kW	1.5 NG	0.9 NG 0.9 LPG	0.9 NG 0.9 LPG	1.3 NG 1.3 LPG	1.3 NG 1.3 LPG	
	MAX	6.85 NG 6.7 LPG	6.0 NG 6.1 LPG	6.8 NG 6.7 LPG	6.0 NG 6.1 LPG	6.8 NG 6.7 LPG	6.0 NG 6.1 LPG	5.6 NG	5.6 NG	5.6 NG	5.6 NG	2.0kW	2.0kW	3.7 NG	2.1 NG 2.1 LPG	2.1 NG 2.1 LPG	3.1 NG 3.1 LPG	3.1 NG 3.1 LPG	
HEAT TYPE		RC	RC	R	R	R	R	RC	RC	RC	RC	C	C	RC	C	C	C	C	
CONTROL TYPE & POSITION		FireSlide® Top Control	FireSlide® Top Control	Manual	Manual	FireSlide® Top Control	FireSlide® Top Control	Side Control	Top Control	Top Control	Top Control/ Electronic Ignition	Top concealed under canopy	Top concealed under canopy	Top Control	Bottom Control	Bottom Control	Bottom Control	Thermo- static	
SAFETY FEATURES	OXYSAFE® SYSTEM	✓	✓	✓	✓	✓	✓	✓	✓	✓	✓	-	-	-	-	-	-	-	
	FLAME SUPERVISION DEVICE	✓	✓	✓	✓	✓	✓	✓	✓	✓	✓	-	-	✓	✓	✓	✓	✓	
CHIMNEY / FLUE TYPE	BRICK	✓	✓	✓	✓	✓	✓	✓	✓	✓	✓	✓	✓	-	-	-	-	-	
	PRE-FAB	✓♦	✓	✓♦	✓	✓♦	✓	✓	✓	✓	✓	✓	✓	-	-	-	-	-	
	PRE-CAST	✓	✓	✓	✓	✓	✓	✓	✓	✓	✓	✓	✓	-	-	-	-	-	
	NO CHIMNEY	✗	✗	✗	✗	✗	✗	✗	✗	✗	✗	✓	✓	✓	✓	✓	✓	✓	
MOUNTING HEARTH / WALL		H&W●	H&W●	H&W●	H&W●	H&W●	H&W●	H&W●	H&W	H&W	H&W	H	H	H	W	W	W	W	
FIREPLACE OPENINGS REQUIRED (mm)	BRICK BUILT		HEIGHT (mm)	555-575	540-575	555-575	535-575	555-575	535-575	510-560	544-610	544-610	544-610	555-590	555-590	-	-	-	-
	BRICK BUILT		WIDTH (mm)	405-457	335-435	405-457	335-435	405-457	335-435	305-440	305-440	305-440	305-440	390-450	390-450	-	-	-	-
	BRICK BUILT		DEPTH (min mm)	285	235	285	200	285	200	100	165	165	165	75	75	-	-	-	-
	PREFAB FLUE		HEIGHT (mm)	555-575	540-575	555-575	535-575	555-575	535-575	510-560	544-610	544-610	544-610	555-590	555-590	-	-	-	-
	PREFAB FLUE		WIDTH (mm)	405-457	335-435	405-457	335-435	405-457	335-435	305-440	380-440	380-440	380-440	390-450	390-450	-	-	-	-
	PREFAB FLUE		DEPTH (min mm)	305	165	305	150	305	150	100	165	165	165	75	75	-	-	-	-
	PRE-CAST FLUE		HEIGHT (mm)	555-575	540-575	555-575	535-575	555-575	535-575	510-560	544-610	544-610	544-610	555-590	555-590	-	-	-	-
	PRE-CAST FLUE		WIDTH (mm)	450	335-435	450	335-435	335-435	335-435	305-440	305-440	305-440	305-440	390-450	390-450	-	-	-	-
	PRE-CAST FLUE		DEPTH (min mm)	240	138	240	120	120	120	100	115	115	115	75	75	-	-	-	-
CLEARANCE REQUIRED FROM CASE (mm)		ABOVE (mm)	135	120	161	165	122	112	100	90	90	90	-	-	780	140	140	89	89
CLEARANCE REQUIRED FROM CASE (mm)		SIDE (TO CORNER WALL) (mm)	108	100	125	100	108	100	100	50	50	50	-	-	102	-	-	-	-
CLEARANCE REQUIRED FROM CASE (mm)		BELOW (IF WALL MOUNTED) (mm)	100	72	100	72	100	72	75	50	50	50	-	-	-	72	72	72	72
APPLIANCE DIMENSIONS (mm)		HEIGHT (A) (mm)	625	630	599	585	638	638	689	610	610	609	623	605	637	394	394	430	430
APPLIANCE DIMENSIONS (mm)		WIDTH (B) (mm)	529	529	492	450	515	515	703	713	713	708	529	490	545	426	450	516	516
APPLIANCE DIMENSIONS (mm)		PROJECTION INTO THE ROOM (C) (mm)	92	77	86	86	51	51	323	177	177	177	78	83	133	126	128	152	152

NOTES

- ♦ Due to the sheer number of varying flue boxes it is not possible to advise on which fires are suitable until the existing fire has been removed.
- We do recommend the use of a hearth.
- R Radiant Heat
- C Convected Heat
- RC Radiant & Convected Heat

